

& ho.re.ca. SERVICES

COMPLETI E CAPI SPALLA
SUITS AND JACKETS

Giblor's
italian work/life specialist







119 Grigio medio / Medium grey



000 Nero / Black



004 Blu / Blue



DAMIANO

Dettagli / Details

- Foderata - 3 bottoni
- 2 spacchi dietro

- Lined - 3 buttons
- 2 rear vents

Taglie / Sizes

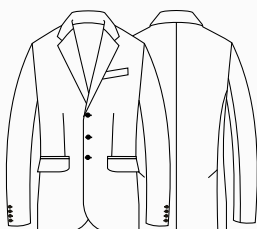
42 ÷ 62 Slim Fit

Art. 12P01C230

119 Grigio medio / Medium grey
000 Nero / Black
004 Blu / Blue

Tessuto / Fabric

53% poliestere 43% lana 4% elastan
53% polyester 43% wool 4% elastane
173 g / m²



MAURO

Dettagli / Details

- Foderato - Passanti cintura
- 2 tasche alla francese - 2 taschine posteriori - Fondo stretto

- Lined - Belt loops
- 2 side pockets - 2 rear pockets - Slim leg

Taglie / Sizes

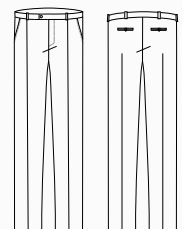
40 ÷ 64 Slim Fit

Art. 12P01P231

119 Grigio medio / Medium grey
000 Nero / Black
004 Blu / Blue

Tessuto / Fabric

53% poliestere 43% lana 4% elastan
53% polyester 43% wool 4% elastane
173 g / m²





COMFORT

119 Grigio medio / Medium grey

COMFORT

000 Nero / Black

COMFORT

004 Blu / Blue

Gonna / Skirt
MIA - Art. 12P01B268
 pag. 271

VITTORIA

Dettagli / Details

- Foderata - 2 bottoni
- Lined - 2 buttons

Taglie / Sizes

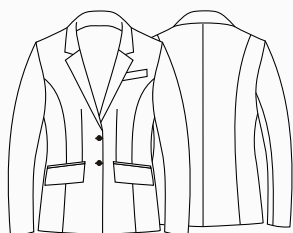
XS ÷ 3XL Slim Fit

Art. 12P01C232

119 Grigio medio / Medium grey
 000 Nero / Black
 004 Blu / Blue

Tessuto / Fabric

53% poliestere 43% lana 4% elasthan
 53% polyester 43% wool 4% elastane
 173 g / m²



MATILDE

Dettagli / Details

- Passanti cintura - Con zip nel fianco
- Belt loops - Side zip fastening

Taglie / Sizes

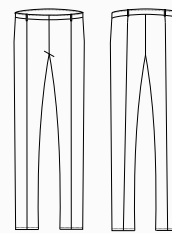
XS ÷ 3XL Slim Fit

Art. 12P01P233

119 Grigio medio / Medium grey
 000 Nero / Black
 004 Blu / Blue

Tessuto / Fabric

53% poliestere 43% lana 4% elasthan
 53% polyester 43% wool 4% elastane
 173 g / m²







Giacca **DAMIANO**
Art. 12P01C230
pag. 253



Giblor's
italian worklife specialist

Giacca **VITTORIA**
Art. 12P01C232
pag. 254



Pantalone **LAYLA**
Art. 17P01P903
pag. 274

Gonna **KATIA**
Art. 17P01B986
pag. 271

Pantalone **GIOVANNI**
Art. 17P01P546
pag. 276

DANA

Dettagli / Details

- Sfoderata
- 2 bottoni

- Unlined
- 2 buttons

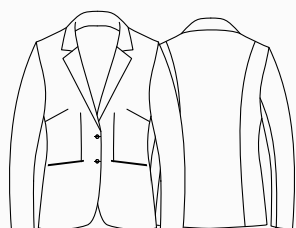
Taglie / Sizes

XS ÷ 3XL Slim Fit

Art. 17P01C901
000 Nero / Black

Tessuto / Fabric

95% poliestere 5% elastan
95% polyester 5% elastane
220 g / m²



ELIO

Dettagli / Details

- Sfoderata
- 2 bottoni

- Unlined
- 2 buttons

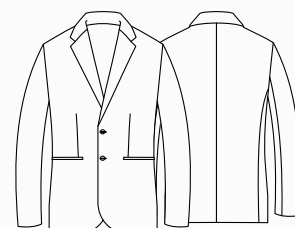
Taglie / Sizes

44 ÷ 58 Slim Fit

Art. 17P01C966
000 Nero / Black

Tessuto / Fabric

95% poliestere 5% elastan
95% polyester 5% elastane
220 g / m²





Pantalone **LAYLA**
Art. 20P01P903
pag. 274

Gonna **KATIA**
Art. 17P01B986
pag. 271

Pantalone **GIOVANNI**
Art. 20P01P546
pag. 276

DANA

Dettagli / Details

- Sfoderata
- 2 bottoni

- Unlined
- 2 buttons

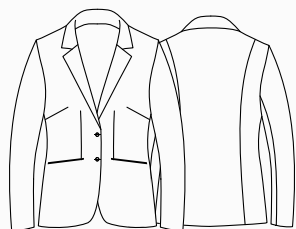
Taglie / Sizes

XS ÷ 3XL Slim Fit

Art. 20P01C901
004 Blu / Blue

Tessuto / Fabric

95% poliestere 5% elastan
95% polyester 5% elastane
220 g / m²



ELIO

Dettagli / Details

- Sfoderata
- 2 bottoni

- Unlined
- 2 buttons

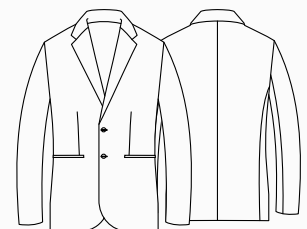
Taglie / Sizes

44 ÷ 58 Slim Fit

Art. 20P01C966
004 Blu / Blue

Tessuto / Fabric

95% poliestere 5% elastan
95% polyester 5% elastane
220 g / m²





Pantalone **NOEMI**
Art. 15P01P605
pag. 273



Pantalone **ADAM**
Art. 15P01P602
pag. 277

ZAIRA

Dettagli / Details

- Sfoderata
- 2 bottoni

- Unlined
- 2 buttons

Taglie / Sizes

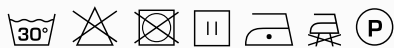
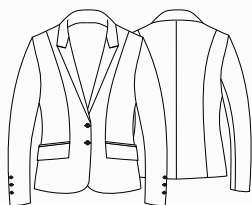
XS ÷ 3XL Slim Fit

Art. 15P01C603

000 Nero / Black

Tessuto / Fabric

70% poliestere 25% viscosa 5% elasthan
70% polyester 25% viscose 5% elastane
200 g / m²



JOSEF

Dettagli / Details

- Sfoderata
- 2 bottoni - 2 spacchi laterali

- Tight waisted
- Unlined
- 2 buttons - 2 side vents

Taglie / Sizes

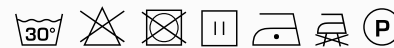
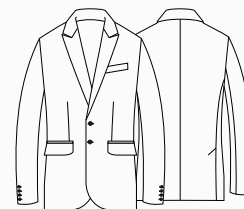
42 ÷ 58 Slim Fit

Art. 15P01C600

000 Nero / Black

Tessuto / Fabric

70% poliestere 25% viscosa 5% elasthan
70% polyester 25% viscose 5% elastane
200 g / m²





Pantalone **NOEMI**
Art. 15P01P605
pag. 273



Pantalone **ADAM**
Art. 15P01P602
pag. 277

ZAIRA

Dettagli / Details

- Sfoderata
- 2 bottoni

- Unlined
- 2 buttons

Taglie / Sizes

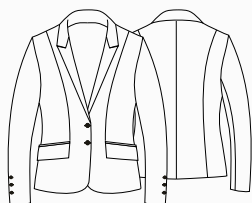
XS ÷ 3XL Slim Fit

Art. 15P01C603

004 Blu / Blue

Tessuto / Fabric

70% poliestere 25% viscosa 5% elasthan
70% polyester 25% viscose 5% elastane
200 g / m²



JOSEF

Dettagli / Details

- Sfoderata
- 2 bottoni - 2 spacchi laterali

- Tight waisted
- Unlined
- 2 buttons - 2 side vents

Taglie / Sizes

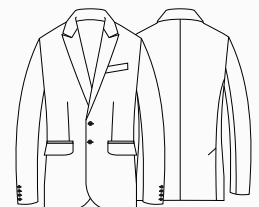
42 ÷ 58 Slim Fit

Art. 15P01C600

004 Blu / Blue

Tessuto / Fabric

70% poliestere 25% viscosa 5% elasthan
70% polyester 25% viscose 5% elastane
200 g / m²





Pantalone **GIORGIA**
Art. 22P01P321
pag. 275

ILARY

Dettagli / Details

- Sfoderata
- 3 bottoni

- Unlined
- 3 buttons

Taglie / Sizes

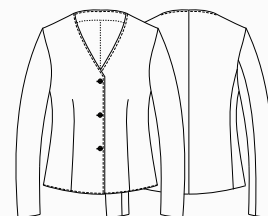
XS ÷ 3XL Slim Fit

Art. 22P01C320

004 Blu / Blue
000 Nero / Black

Tessuto / Fabric

95% poliestere 5% elasthan
95% polyester 5% elastane
220 g / m²





Art. 22P01C320
000 Nero / Black

FABIO

Dettagli / Details

- Sfoderata
- Doppia asola con bottone gemello in metallo
- Unlined
- Metal cufflinks

Taglie / Sizes

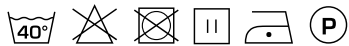
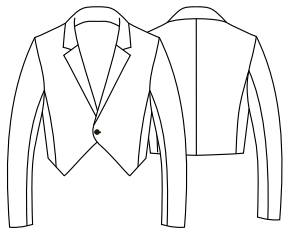
XS ÷ 3XL Slim Fit

Art. 182

000 Nero / Black
120 Panna / Cream

Tessuto / Fabric

100% poliestere
100% polyester
220 g / m²



Art. 182
120 Panna / Cream

ILENIA

Dettagli / Details

- Sfoderata
- Doppia asola con bottone gemello in metallo

- Unlined
- Metal cufflinks

Taglie / Sizes

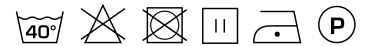
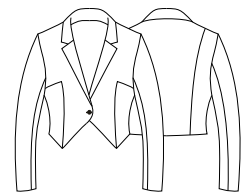
XS ÷ 3XL Slim Fit

Art. 1182

000 Nero / Black
120 Panna / Cream

Tessuto / Fabric

100% poliestere
100% polyester
220 g / m²



Art. 1182
120 Panna / Cream

VITTORIO

Dettagli / Details

- Sfoderata
- 1 bottone

- Unlined
- 1 button

Taglie / Sizes

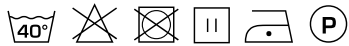
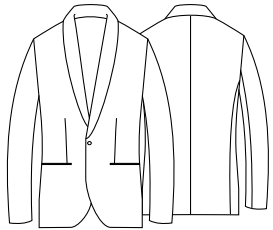
XS ÷ 3XL Slim Fit

Art. 121

120 Panna / Cream
000 Nero / Black
00 Bianco / White

Tessuto / Fabric

100% poliestere
100% polyester
220 g / m²



Art. 121
000 Nero / Black



Art. 121
00 Bianco / White

PIER LUX

Dettagli / Details

- Coreana
- Sfoderata con bottone in metallo più alamaro dorato
- Mandarin collar
- Unlined with metal buttons and gold frogs

Taglie / Sizes

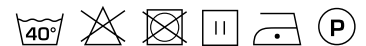
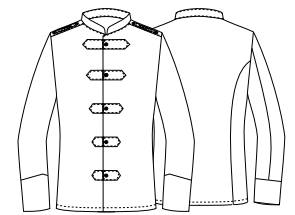
XS ÷ 3XL Slim Fit

Art. 138/A

120 Panna / Cream

Tessuto / Fabric

100% poliestere
100% polyester
220 g / m²



SOTTOCOLLO PER COREANA UNDERCOLLAR

Art. 3
00 Bianco / White

Tessuto / Fabric
65% poliestere 35% cotone
65% polyester 35% cotton

Taglie / Sizes
Taglia unica / One size





PIER

Dettagli / Details

- Coreana
- Bottoni in metallo
- 2 tasche

- Mandarin collar
- Metal buttons
- 2 pockets

Taglie / Sizes

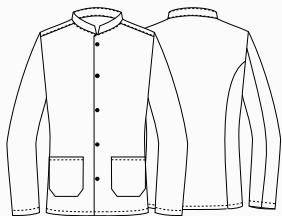
XS ÷ 3XL Slim Fit

Art. 135

00 Bianco / White

Tessuto / Fabric

100% cotone
100% cotton
180 g / m²



PIER

Dettagli / Details

- Coreana
- Sfoderata
- Bottoni in metallo

- Mandarin collar
- Unlined
- Metal buttons

Taglie / Sizes

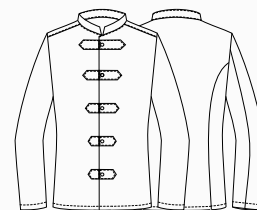
XS ÷ 3XL Slim Fit

Art. 138

00 Bianco / White

Tessuto / Fabric

100% poliestere
100% polyester
220 g / m²





PIER

Dettagli / Details

- Coreana
- Sfoderata
- Bottoni quattro fori
- 2 tasche

- Mandarin collar
- Unlined
- 4-hole buttons
- 2 pockets

Taglie / Sizes

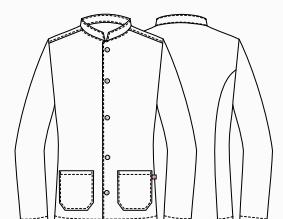
XS ÷ 3XL Slim Fit

Art. 23P01G135

G000 Gessato nero / Black pinstriped
G006 Gessato bordeaux / Burgundy pinstriped

Tessuto / Fabric

70% cotone 30% poliestere
70% cotton 30% polyester
144 g / m²



Giblor's
italian worklife specialist



Pantalone **GIOVANNI**
Art. 17P01P546
pag. 276

Pantalone **GIORGIA**
Art. 22P01P321
pag. 275

KATIA

Dettagli / Details

- Sfoderata
- Vita bassa
- Spacco nel centro dietro

- Unlined
- Low waist
- Back central vent

Taglie / Sizes

XS ÷ 3XL Slim Fit

Art. 20P01B986

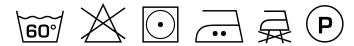
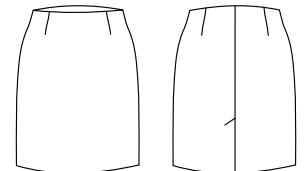
004 Blu / Blue

Art. 17P01B986

000 Nero / Black

Tessuto / Fabric

95% poliestere 5% elasthan
95% polyester 5% elastane
220 g / m²



Art. 17P01B986

000 Nero / Black



Art. 20P01B986

004 Blu / Blue



Art. 12P01B268

000 Nero / Black



Art. 12P01B268

004 Blu / Blue



Art. 12P01B268

119 Grigio medio / Medium grey



MIA

Dettagli / Details

- Foderata - Con fascione
- Chiusura con zip nel centro dietro
- Spacco nel centro dietro

- Lined - With waistband
- Back zip fastening
- Back central vent

Taglie / Sizes

XS ÷ XXL Slim Fit

Art. 12P01B268

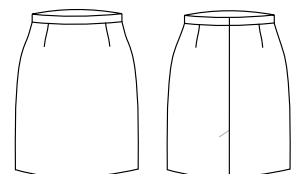
000 Nero / Black

004 Blu / Blue

119 Grigio medio / Medium grey

Tessuto / Fabric

53% poliestere 43% lana 4% elasthan
53% polyester 43% wool 4% elastane
173 g / m²





MATILDE

Dettagli / Details

- Passanti cintura
- Zip nel fianco

- Belt loops
- Side zip fastening

Taglie / Sizes

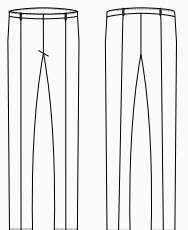
XS ÷ 3XL

Art. 12P01P233

004 Blu / Blue
119 Grigio medio / Medium grey
000 Nero / Black

Tessuto / Fabric

53% poliestere 43% lana 4% elastan
53% polyester 43% wool 4% elastane
173 g / m²





NOEMI

Dettagli / Details

- Passanti cintura
- 2 tasche alla francese
- 2 taschine posteriori
- Fondo stretto

- Belt loops
- 2 side pockets
- 2 rear pockets
- Slim leg

Taglie / Sizes

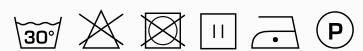
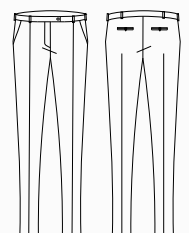
XS ÷ 3XL Slim Fit

Art. 15P01P605

000 Nero / Black
004 Blu / Blue

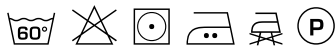
Tessuto / Fabric

70% poliestere 25% viscosa 5% elastan
70% polyester 25% viscose 5% elastane
200 g / m²

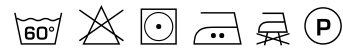




Art. 20P01P903
004 Blu / Blue



Art. 17P01P903
000 Nero / Black



LAYLA

Dettagli / Details

- Passanti cintura
- Bottone 4 fori
- Chiusura zip
- 2 tasche
- Fondo stretto

- Belt loops
- 4-hole button
- Zip fly
- 2 pockets
- Slim leg

Taglie / Sizes

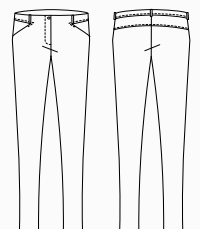
XS ÷ 3XL

Art. 20P01P903
004 Blu / Blue

Art. 17P01P903
000 Nero / Black

Tessuto / Fabric

95% poliestere 5% elasthan
95% polyester 5% elastane
220 g / m²





GIORGIA

Dettagli / Details

- Passanti cintura
- Bottone 4 fori
- Chiusura zip
- 2 tasche

- Belt loops
- 4-hole button
- Zip fly
- 2 pockets

Taglie / Sizes

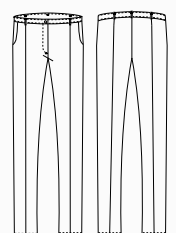
XS ÷ 3XL Slim Fit

Art. 22P01P321

000 Nero / Black
004 Blu / Blue

Tessuto / Fabric

95% poliestere 5% elasthan
95% polyester 5% elastane
220 g / m²



MATTEO

Dettagli / Details

- Sfoderato - Passanti cintura
- 2 tasche alla francese
- 2 taschine posteriori - Fondo stretto

- Unlined - Belt loops
- 2 side pockets
- 2 rear pockets - Slim leg

Taglie / Sizes

40 ÷ 64 Slim Fit

Art. 90

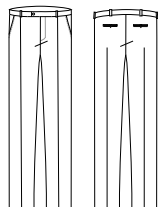
000 Nero / Black

Art. 90/B

004 Blu / Blue

Tessuto / Fabric

100% poliestere
100% polyester
160 g / m²



GIOVANNI

Dettagli / Details

- Sfoderato - Passanti cintura - Vita bassa
- 2 tasche alla francese
- 2 taschine posteriori - Fondo stretto

- Unlined - Belt loops - Low waist
- 2 side pockets
- 2 rear pockets - Slim leg

Taglie / Sizes

42 ÷ 58 Slim Fit

Art. 17P01P546

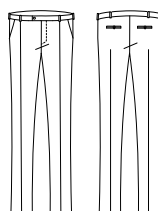
000 Nero / Black

Art. 20P01P546

004 Blu / Blue

Tessuto / Fabric

95% poliestere 5% elasthan
95% polyester 5% elastane
220 g / m²



COMFORT

COMFORT



COMFORT

COMFORT

COMFORT

MAURO

Dettagli / Details

- Foderato - Passanti cintura
- 2 tasche alla francese
- 2 taschine posteriori
- Fondo stretto
- Lined - Belt loops
- 2 side pockets
- 2 rear pockets
- Slim leg

Taglie / Sizes

40 ÷ 64 Slim Fit

Art. 12P01P231

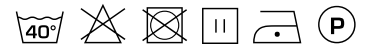
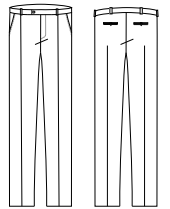
000 Nero / Black

004 Blu / Blue

119 Grigio medio / Medium grey

Tessuto / Fabric

53% poliestere 43% lana 4% elasthan
53% polyester 43% wool 4% elastane
173 g / m²



COMFORT

COMFORT

ADAM

Dettagli / Details

- Sfoderato - Passanti cintura
- 2 tasche alla francese
- 2 taschine posteriori
- Fondo stretto
- Unlined - Belt loops
- 2 side pockets
- 2 rear pockets
- Slim leg

Taglie / Sizes

42 ÷ 56 Slim Fit

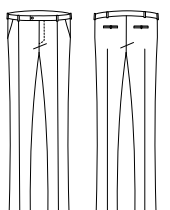
Art. 15P01P602

000 Nero / Black

004 Blu / Blue

Tessuto / Fabric

70% poliestere 25% viscosa 5% elasthan
70% polyester 25% viscose 5% elastane
200 g / m²





COMFORT



IRIDE

Dettagli / Details

- Passanti cintura
- Bottone a chiodo
- Chiusura zip
- 2 tasche
- 2 tasche sul retro

- Belt loops
- Stud button
- Zip fly
- 2 pockets
- 2 rear pockets

Art. 20P02P112

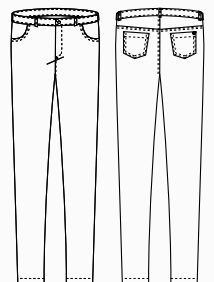
000 Nero / Black
00 Bianco / White

Tessuto / Fabric

70% cotone 28% poliestere 2% elasthan
70% cotton 28% polyester 2% elastane
210 g / m²

Taglie / Sizes

XS ÷ 3XL Slim Fit



COMFORT

Art. 20P02P112
00 Bianco / White

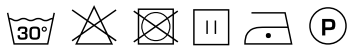
COMFORT



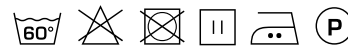
Art. 21P01P241
000 Nero / Black



Art. 21P01P241
000 Nero / Black



Art. 21P02P262
00 Bianco / White



REBECCA

Dettagli / Details

- Fascione con elastico sul retro
- Bottone 4 fori
- 2 tasche

- Elasticated waistband on the back
- 4-hole button
- 2 pockets

Taglie / Sizes

XS ÷ 3XL Slim Fit

Art. 21P01P241
000 Nero / Black

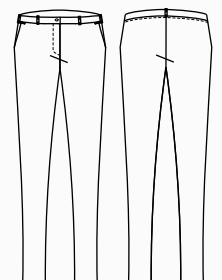
Tessuto / Fabric

70% poliestere 25% viscosa 5% elasthan
70% polyester 25% viscose 5% elastane
200 g / m²

Art. 21P02P262
00 Bianco / White

Tessuto / Fabric

62% cotone 35% poliestere 3% elasthan
62% cotton 35% polyester 3% elastane
180 g / m²



COMFORT



BRENDA

Dettagli / Details

- Passanti cintura
- Bottone automatico
- Chiusura zip
- 2 tasche
- 2 tasche sul retro
- Fondo stretto

- Belt loops
- Press stud
- Zip fly
- 2 pockets
- 2 rear pockets
- Slim leg

Taglie / Sizes

XS ÷ 4XL Slim Fit

Art. 24P08P392

000 Nero / Black

004 Blu / Blue

016 Tortora / Taupe

102 Verde militare / Military green

Tessuto / Fabric

98% cotone 2% elastan

98% cotton 2% elastane

200 g / m²



Art. 24P08P392
000 Nero / Black



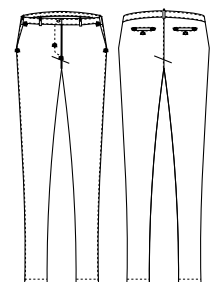
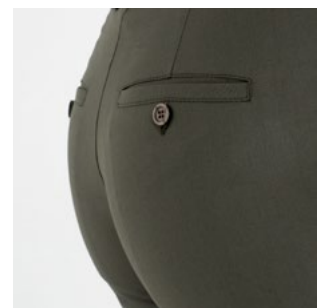
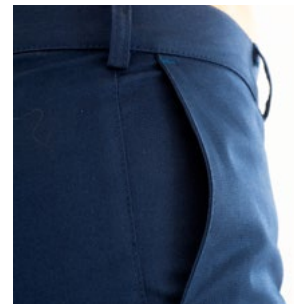
Art. 24P08P392
004 Blu / Blue



Art. 24P08P392
016 Tortora / Taupe



Art. 24P08P392
102 Verde militare / Military green



COMFORT



Art. 23P08P347

102 Verde militare / Military green

DYLAN

Dettagli / Details

- Passanti cintura
- Bottone automatico
- Chiusura zip
- 2 tasche
- 2 tasche sul retro
- Fondo stretto

- Belt loops
- Press stud
- Zip fly
- 2 pockets
- 2 rear pockets
- Slim leg

Taglie / Sizes

S ÷ 4XL Slim Fit



Art. 23P08P347
000 Nero / Black



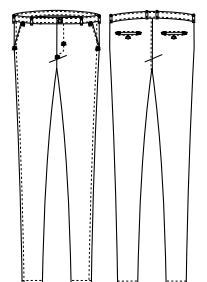
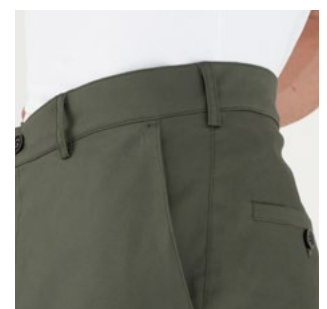
Art. 23P08P347
004 Blu / Blue



Art. 23P08P347
016 Tortora / Taupe



Art. 23P08P347
102 Verde militare / Military green



COMFORT



Art. 23P08P353
S119 Scozzese grigio / *Scottish grey*

Art. 23P08P354
S119 Scozzese grigio / *Scottish grey*



DYLAN

Dettagli / Details

- Passanti cintura - Bottone 4 fori
- Chiusura zip - 2 tasche
- 2 tasche sul retro
- Fondo stretto

- Belt loops - 4-hole buttons
- Zip fly - 2 pockets
- 2 rear pockets
- Slim leg

Taglie / Sizes

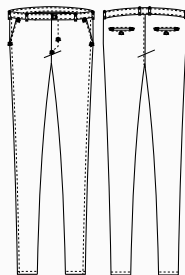
S ÷ 4XL Slim Fit

Art. 23P08P353

S119 Scozzese grigio / Scottish grey

Tessuto / Fabric

80% poliestere 18% viscosa 2% elasthan
80% polyester 18% viscose 2% elastane
180 g / m²



REBECCA

Dettagli / Details

- Fascione con elastico sul retro - Passanti cintura
- Bottone 4 fori
- 2 tasche

- Elasticated waistband on the back - Belt loops
- 4-hole buttons
- 2 pockets

Taglie / Sizes

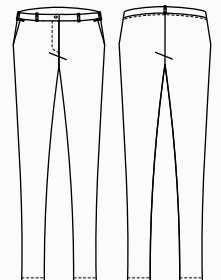
XS ÷ 3XL Slim Fit

Art. 23P08P354

S119 Scozzese grigio / Scottish grey

Tessuto / Fabric

80% poliestere 18% viscosa 2% elasthan
80% polyester 18% viscose 2% elastane
180 g / m²



& no.re.ca. SERVICES

CAMICIE
SHIRTS AND BLOUSES

Giblor's
italian work/life specialist



NOVAK

Dettagli / Details

- Collo coreano
- Polsino regolabile

- Mandarin collar
- Adjustable cuff

Taglie / Sizes

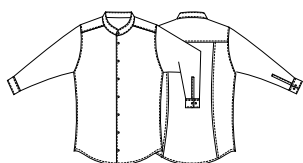
S ÷ 4XL Slim Fit

Art. 19P01N085

00 Bianco / White
000 Nero / Black

Tessuto / Fabric

65% poliestere 35% cotone
65% polyester 35% cotton
110 g / m²



Art. 19P01N085

000 Nero / Black



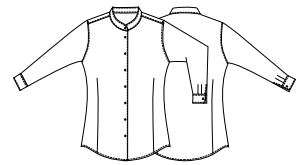
VENUS

Dettagli / Details
- Collo coreano
- Mandarin collar

Taglie / Sizes
XS ÷ 4XL Slim Fit

Art. 19P01N086
000 Nero / Black
00 Bianco / White

Tessuto / Fabric
65% poliestere 35% cotone
65% polyester 35% cotton
110 g / m²



Art. 19P01N086
00 Bianco / White



ho.re.ca. & services

Camicie uomo e donna

Shirts and blouses

PETER

Dettagli / Details

- Collo classico
- Polsino regolabile

- Classic collar
- Adjustable cuff

Taglie / Sizes

S ÷ 4XL Slim Fit

Art. 22P01N088

118 Azzurro / Light blue

Art. 19P01N088

00 Bianco / White

000 Nero / Black

004 Blu / Blu

019 Grigio chiaro / Light grey

322 Marrone / Brown

Tessuto / Fabric

97% cotone 3% elasthan

97% cotton 3% elastane

96 g / m²



COMFORT





Art. 22P01N088
118 Azzurro / *Light blue*



Art. 19P01N088
000 Nero / *Black*



Art. 19P01N088
004 Blu / *Blue*



Art. 19P01N088
019 Grigio chiaro / *Light grey*



Art. 19P01N088
322 Marrone / *Brown*



Art. 19P01N088
00 Bianco / *White*



FLAVIA

Dettagli / Details

- Collo classico
- Classic collar

Taglie / Sizes

XS ÷ 4XL Slim Fit

Art. 22P01N087

118 Azzurro / Light blue

Art. 19P01N087

00 Bianco / White

000 Nero / Black

004 Blu / Blu

019 Grigio chiaro / Light grey

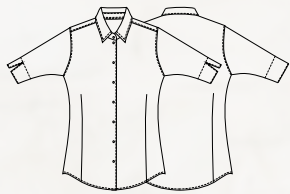
322 Marrone / Brown

Tessuto / Fabric

97% cotone 3% elasthan

97% cotton 3% elastane

96 g / m²



COMFORT





Art. 22P01N087
118 Azzurro / Light blue



Art. 19P01N087
000 Nero / Black



Art. 19P01N087
004 Blu / Blue



Art. 19P01N087
019 Grigio chiaro / Light grey



Art. 19P01N087
322 Marrone / Brown



Art. 19P01N087
00 Bianco / White



LELA

Dettagli / Details

- Collo classico

- Classic collar

Taglie / Sizes

XS ÷ 3XL Slim Fit

Art. 10M164

00 Bianco / White

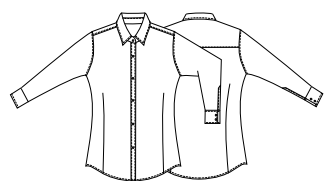
000 Nero / Black

Tessuto / Fabric

97% cotone 3% elasthan

97% cotton 3% elastane

96 g / m²



Art. 10M164

000 Nero / Black



COMFORT



METKA

Dettagli / Details
- Collo classico

- Classic collar

Taglie / Sizes
XS ÷ XXL Slim Fit

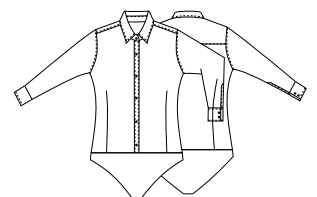
Art. 15P01N626
00 Bianco / White

Tessuto / Fabric
97% cotone 3% spandex
97% cotton 3% spandex
96 g / m²



Slip in microfibra
con bottoni a pressione

*Microfiber slip
with press studs*



ho.re.ca. & services

Camicie uomo e donna
Shirts and blouses

LILLY

Dettagli / Details

- Collo classico
- Polsino regolabile

- Classic collar
- Adjustable cuff

Taglie / Sizes

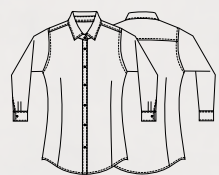
XS ÷ 4XL Slim Fit

Art. 24P01N408

S004 Scozzese blu / Scottish blue

Tessuto / Fabric

97% cotone 3% elastan
97% cotton 3% elastane
96 g / m²



COMFORT



BORIS

Dettagli / Details

- Collo classico
- Polsino regolabile

- Classic collar
- Adjustable cuff

Taglie / Sizes

S ÷ 4XL Slim Fit

Art. 24P01N407

S004 Scozzese blu / Scottish blue

Tessuto / Fabric

97% cotone 3% elasthan
97% cotton 3% elastane
96 g / m²



COMFORT



ho.re.ca. & services

Camicie uomo e donna
Shirts and blouses

LILLY

Dettagli / Details

- Collo classico
- Polsino regolabile

- Classic collar
- Adjustable cuff

Taglie / Sizes

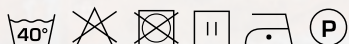
XS ÷ 4XL Slim Fit

Art. 24P01N408

Q322 Quadretto marrone
Q322 Brown check

Tessuto / Fabric

97% cotone 3% elasthan
97% cotton 3% elastane
96 g / m²



COMFORT



BORIS

Dettagli / Details

- Collo classico
- Polsino regolabile

- Classic collar
- Adjustable cuff

Taglie / Sizes

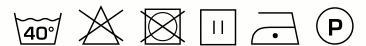
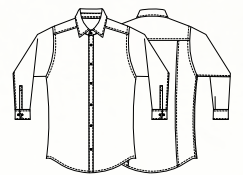
S ÷ 4XL Slim Fit

Art. 24P01N407

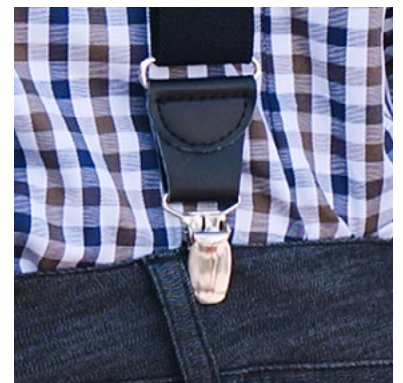
Q322 Quadretto marrone
Q322 Brown check

Tessuto / Fabric

97% cotone 3% elasthan
97% cotton 3% elastane
96 g / m²



COMFORT



BRETELLE / SUSPENDERS

pag. 369

Giblor's
italian worklife specialist



Camicia **VENUS**
Art. 19P01N086
pag. 291



Camicia **NOVAK**
Art. 19P01N085
pag. 290

PRINCE

Dettagli / Details

- Collo classico
- Polsino regolabile

- Classic collar
- Adjustable cuff

Taglie / Sizes

XS ÷ 5XL Slim Fit

Art. 11P01056

00 Bianco / White
000 Nero / Black

Tessuto / Fabric

65% poliestere 35% cotone
65% polyester 35% cotton
110 g / m²



Art. 11P01056

000 Nero / Black





AURORA

Dettagli / Details

- Collo classico

- Classic collar

Taglie / Sizes

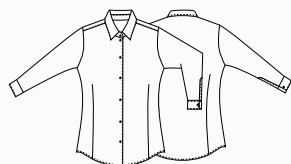
XS ÷ 3XL Slim Fit

Art. 1600

00 Bianco / White

Tessuto / Fabric

65% poliestere 35% cotone
65% polyester 35% cotton
110 g / m²



FARA

Dettagli / Details

- Collo classico

- Classic collar

Taglie / Sizes

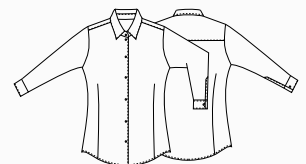
XS ÷ 3XL Slim Fit

Art. 11P01057

000 Nero / Black

Tessuto / Fabric

65% poliestere 35% cotone
65% polyester 35% cotton
110 g / m²





PRINCE

Dettagli / Details

- Collo classico
- Manica corta
- 1 tasca

- Classic collar
- Short sleeve
- 1 pocket

Taglie / Sizes

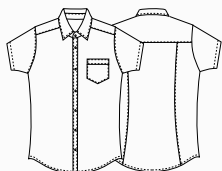
XS ÷ 5XL Slim Fit

Art. 11P01056C

00 Bianco / White

Tessuto / Fabric

65% poliestere 35% cotone
65% polyester 35% cotton
110 g / m²



AURORA

Dettagli / Details

- Collo classico
- Manica corta

- Classic collar
- Short sleeve

Taglie / Sizes

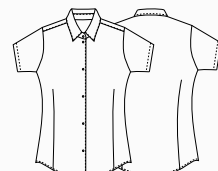
XS ÷ XXL Slim Fit

Art. 1600C

00 Bianco / White

Tessuto / Fabric

65% poliestere 35% cotone
65% polyester 35% cotton
110 g / m²



SHARM

Dettagli / Details

- Collo fantasia
- Manica 3/4

- Open collar
- 3/4 Sleeve

Taglie / Sizes

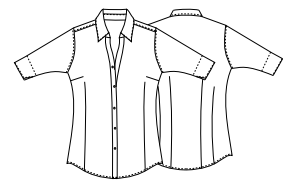
XS ÷ 3XL Regular Fit

Art. 1003

00 Bianco / White

Tessuto / Fabric

65% poliestere 35% cotone
65% polyester 35% cotton
110 g / m²



Art. 1003N

000 Nero / Black



Giblor's
italian worklife specialist



Kimono **PAOLA**
pag. 151 - Catalogo Health & Wellness 2024

Art. 21P08N254
J004 Jeans blu / Blue jeans



ROGER

Dettagli / Details

- Abbottonatura a vista con automatici
 - Taschino sul petto
- Polsini con automatico a vista
 - 2 spacchetti nel fianco
- Visible buttoning with press studs
 - Breast pocket
- Visible press stud on the cuffs
 - 2 side vents

Taglie / Sizes

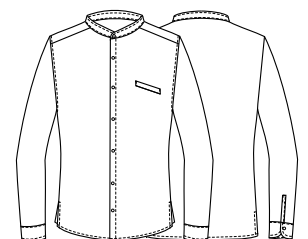
S ÷ 4XL Slim fit

Art. 21P08N254

J004 Jeans blu
J004 Blue jeans

Tessuto / Fabric

70% viscosa 27% poliestere 3% elasthan
70% viscose 27% polyester 3% elastane
200 g / m²





DRY
& CLEAN

**Fresh &
Stretch**



Art. Q2L00219
C01 Bianco / White



JEFF

Dettagli / Details

- Collo e fondo maniche a costine
- Spacchi laterali
- Ricamo manica sinistra (indossata)
- Idrorepellente
- Ribbed collar and bottom sleeves
- Side vents
- Embroidery on the left sleeve (worn)
- Waterproof

Taglie / Sizes

S ÷ 4XL Slim Fit

Art. Q2L00219

C01 Bianco / White
U32 Nero / Black
Z48 Blu / Blue

Tessuto / Fabric

100% poliammide
100% polyamide
195 g / m²



Art. Q2L00219

C01 Bianco / White



Art. Q2L00219

Z48 Blu / Blue



Art. Q2L00219

U32 Nero / Black



SUSAN

Dettagli / Details

- Collo e fondo maniche a costine
- Spacchi laterali
- Ricamo manica sinistra (indossata)
- Idrorepellente

- Ribbed collar and bottom sleeves
- Side vents
- Embroidery on the left sleeve (worn)
- Waterproof

Taglie / Sizes

XS ÷ 3XL Slim Fit

Art. Q2L00268

C01 Bianco / White
U32 Nero / Black
Z48 Blu / Blue

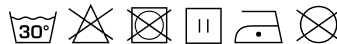
Tessuto / Fabric

100% poliammide
100% polyamide
195 g / m²



Art. Q2L00268

C01 Bianco / White



Art. Q2L00268

U32 Nero / Black



Art. Q2L00268

Z48 Blu / Blue





DRY
& CLEAN



Fresh &
Stretch

CARLO POLO UOMO

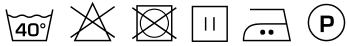
Taglie / Sizes
XS ÷ XXL

Art. 590

00 Bianco / White
000 Nero / Black

Tessuto / Fabric

100% cotone / 100% cotton



BILLY T-SHIRT

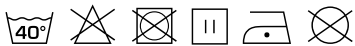
Taglie / Sizes
S ÷ 3XL

Art. 592

00 Bianco / White

Tessuto / Fabric

100% cotone / 100% cotton



Art. 592
00 Bianco / White



Art. 590
000 Nero / Black

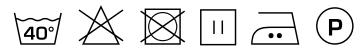
CARLA

POLO DONNA

Taglie / Sizes
S ÷ XL

Art. 602
00 Bianco / White
000 Nero / Black

Tessuto / Fabric
100% cotone
100% cotton



Art. 602
000 Nero / Black